

Compact hydraulic power pack type NPC

Compact hydraulic power packs are a type of hydraulic power pack. They are characterised by a highly compact design, since the motor shaft of the electric motor also acts as the pump shaft.

The ready-for-connection compact hydraulic power pack type NPC is suitable for hydraulic systems with operating mode S2. Type NPC includes a DC motor. The power pack is available in a horizontal or vertical version. Either single-circuit systems or dual-circuit systems can be selected. A radial piston pump or an external gear pump can be used as a hydraulic pump.

The compact hydraulic power pack type NPC is suitable for use as a highly compact control system, since the pressure-limiting valve is integrated and valve banks can be directly mounted.

Features and benefits:

- Very low space requirements and easy to transport
- Supplied with direct current at 12V DC or 24V DC
- Particularly suited to mobile applications and construction site operation
- Long lifetime and excellent reliability achieved by using radial piston pumps
- Environmentally sound thanks to low oil fill volumes and minimum cost of disposal
- Low costs for hydraulic fluid
- Co-ordinated range of valves and accessories from the modular system

Intended applications:

- Riveting
- Brakes for wind power plants
- Hydraulic jigs
- Crimping
- Embossing



Nomenclature:	Radial piston pump with integrated electric motor (DC)
Design:	Oil immersed compact hydraulic power pack For short period operation
p_{max}:	750 bar
Q_{max}:	1.36 lpm (V _{g max} = 0.76 cm ³ /rev)

Design and order coding example

NPC 11 / 0,87 - 1/170 - R - G12 BWN 1 - NN - 35 - 1 - G12

Valve assembly

- BWN1, BWH1, VB01
- Can be directly assembled without connection blocks according to [D 7470 B/1](#), [D 7302](#)

Motor voltage 12V DC or 24V DC

Check valve With/without check valve

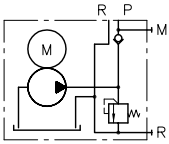
Pressure limiting valve and setting

- 1 = Fixed
- 2 = Manually adjustable

Delivery flow [lpm]

Basic type, size Type NPC, size 11 and 12

Function



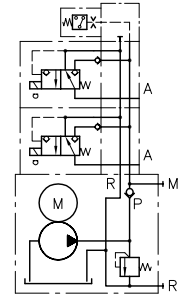
Circuit example:

NPC 11 / 0.87 - 1/170 - R - G 12

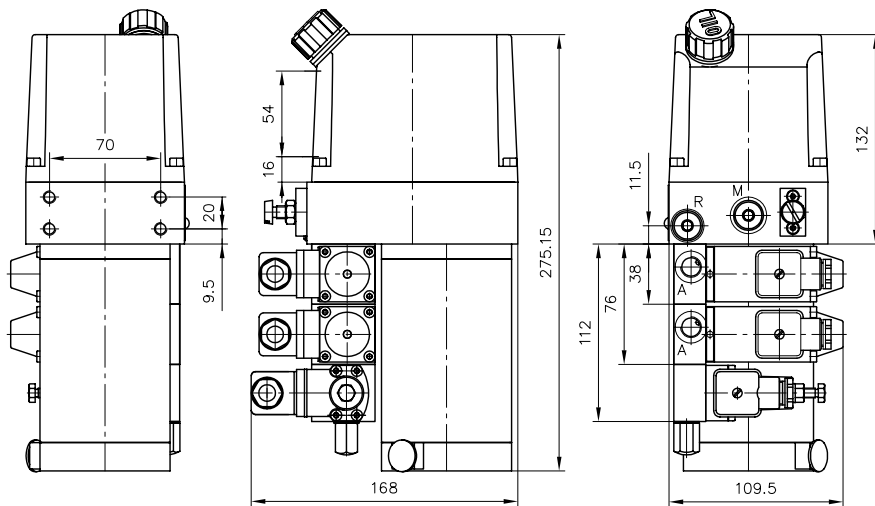
Compact hydraulic power pack type NPC
pump delivery flow approx. 0.87 lpm

BWN 1 - NN - 35 - 1 - G 12

Directly mounted valve bank type BWN with two valve sections and pressure switch in P gallery, solenoid voltage 12V DC



General parameters and dimensions



	Delivery flow						Max. pressure		
	Q_{pu} [lpm]						p_{max} [bar]	P_N [kW]	m [kg]
NPC 11 (24 V)	0.2	0.31	0.44	0.61	0.87	1.05	750	0.1/0.3	6
NPC 11 (12 V)								0.1/0.25	6
NPC 12 (24 V)	0.4	0.65	0.94	1.28	1.71	2.14	750	0.6	8
NPC 12 (12 V)								0.6	8

Associated technical data sheets:

- Compact hydraulic power pack type NPC: [D 7940](#)

Directly mountable valve banks:

- Valve bank (directional seated valve) type VB: [D 7302](#)
- Valve bank (directional seated valve) type BWN and BWH: [D 7470 B/1](#)
- Pressure switch type DG: [D 5440](#), [D 5440 E/1](#), [D 5440 F](#)
- Electronic pressure transducer type DT: [D 5440 T/1](#), [D 5440 T/2](#)